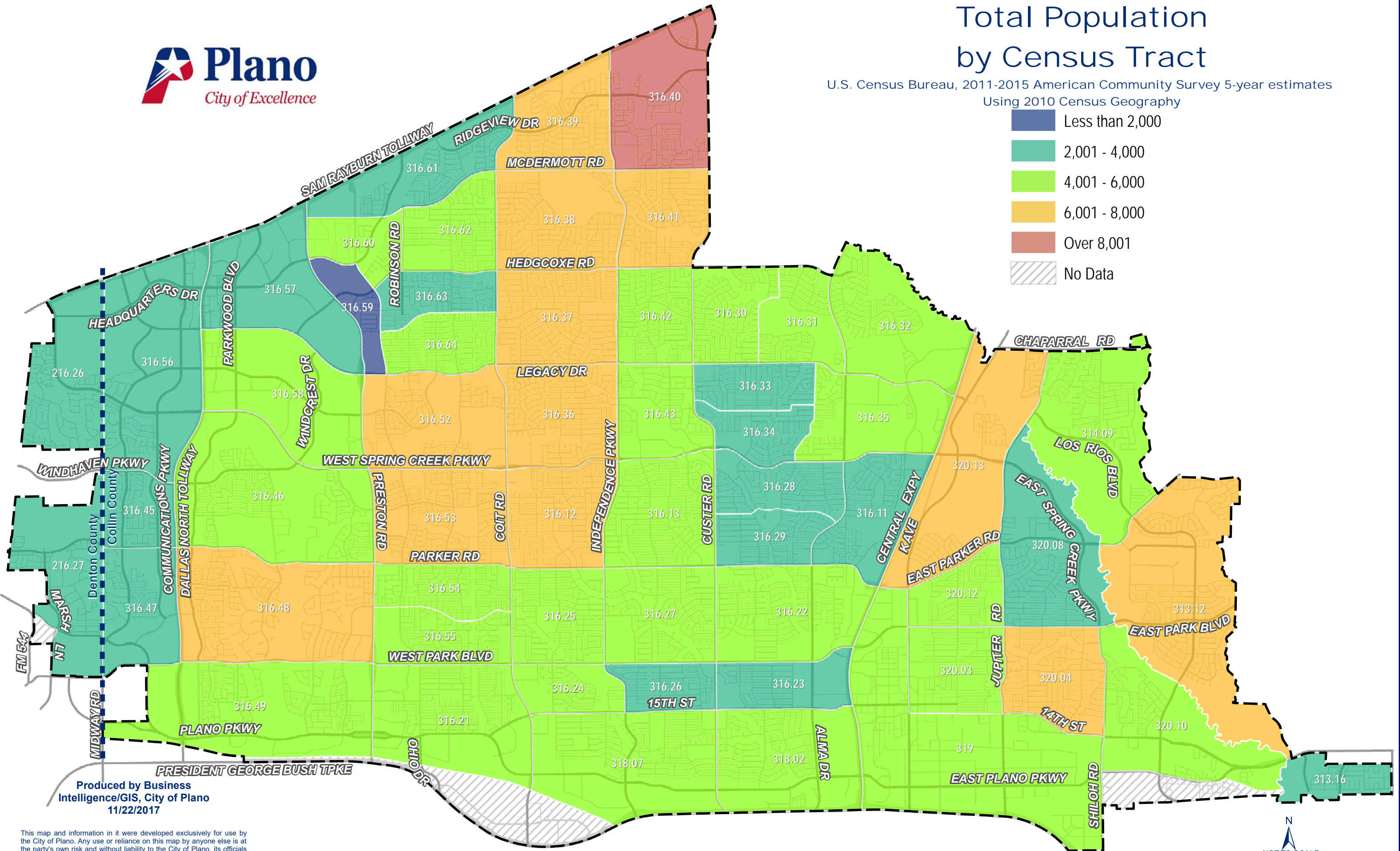


Total Population by Census Tract

U.S. Census Bureau, 2011-2015 American Community Survey 5-year estimates
Using 2010 Census Geography

- Less than 2,000
- 2,001 - 4,000
- 4,001 - 6,000
- 6,001 - 8,000
- Over 8,001
- No Data



Produced by Business Intelligence/GIS, City of Plano
11/22/2017

This map and information in it were developed exclusively for use by the City of Plano. Any use or reliance on this map by anyone else is at the party's own risk and without liability to the City of Plano, its officials or employees for any discrepancies, errors, or variances which may



shaif_11/22/2017_Z:\Comprehensive Planning\GIS\ACS2015_5yr_CENSUS\TRACT\WebMaps\2015ACS_TotPop.mxd